

# Airport Terminal to Light Rail Transit Walkway

Commission Meeting  
November 22, 2016



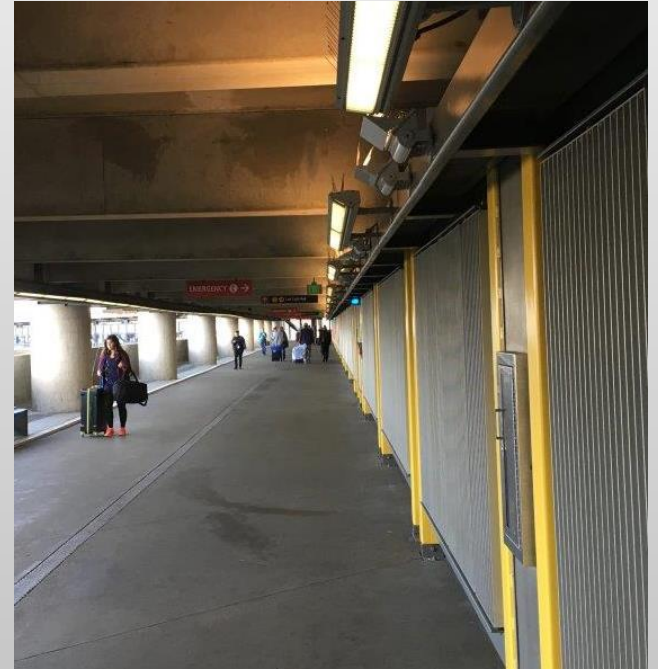
# Current Initiatives

- Immediate walkway improvements
- Airport Signage and Wayfinding Program
  - Airport-wide signage and wayfinding study
  - Development of Airport signage master plan
- Light Rail Walkway Options Study
  - Evaluation of options, complete Q4 2017

Objective: Improve Quality of Service between Airport Light Rail Station and Terminal

# Existing Walkway

- Inside Main Garage
- Connects to Airport Station and International Blvd pedestrian bridge
- No moving walkways due to floor height
- Passengers can use Airport wheelchair service



# Garage Walkway Improvements

- Phased Approach
  - Phase 1 ~\$1.8M (wind screens, painted ceiling, column wraps, cart service)
  - Phase 2 ~\$1.7M (floor treatment, gas radiant heat, fire protection)



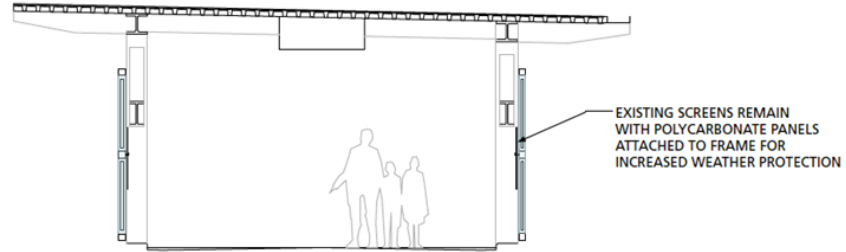
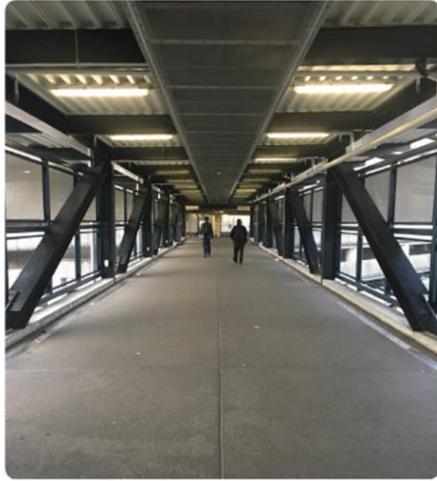
Immediate Improvements

# Garage Walkway Improvements

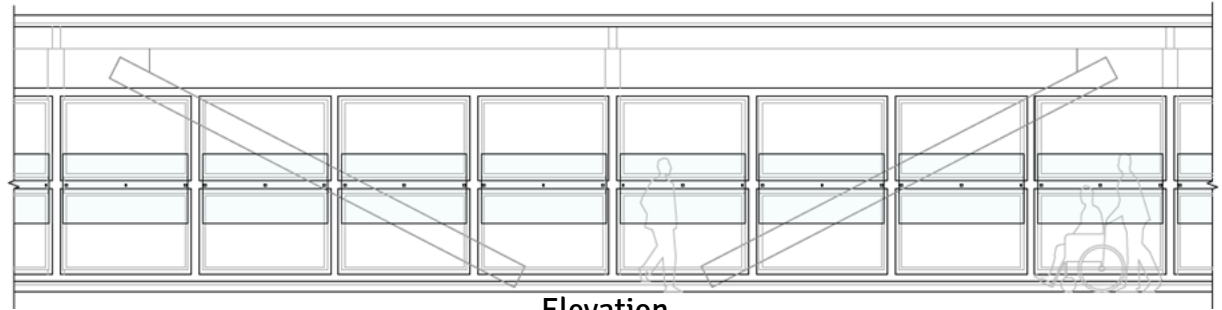


Improved passenger experience

# Elevated Walkway Improvements



Section



Elevation

Improved Weather Protection

# Authorization Request

- Request Commission authorization for the Chief Executive Officer to:
  - (1) prepare design and construction bid documents
  - (2) advertise and execute major works construction contracts
  - (3) purchase goods and services
  - (4) utilize Port crews

Total estimated cost of \$3,500,000